

interiors

PROGETTO PAOLO ZANI

ASCOT**STUDIO**





Ambientazione realizzata con Interiors Beige e Moka

interiors



IN020H Interiors Beige (hard) 20x50,2 8"x20"

584



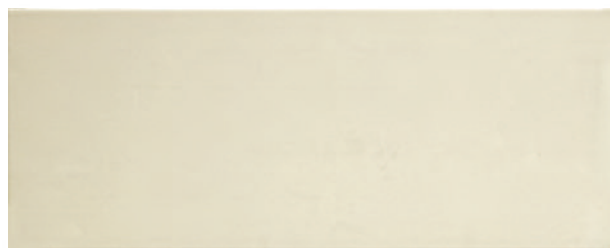
IN020S Interiors Beige (soft) 20x50,2 8"x20"

584



IN020M Interiors Beige (medium) 20x50,2 8"x20"

584



IN020P Interiors Beige (plane) 20x50,2 8"x20"

580



INL01A Interiors Listello Cold 4x50,2 1,6"x20"

536



IN020E Interiors Beige End 4x50,2 1,6"x20"

530



INL02A Interiors Listello Hot 4x50,2 1,6"x20"

536

■ Materiale venduto al mq - Item sold by sqmt
Article vendu au m2 - Artikel per qm verkauft

■ Materiale venduto al pz - Item sold by piece
Article vendu a la piece - Artikel per stueck verkauft

BITECH[®]

CERAMICA PORCELLANATA



IN060H Interiors Moka (hard) 20x50,2 8"x20"

584



IN060S Interiors Moka (soft) 20x50,2 8"x20"

584



IN060M Interiors Moka (medium) 20x50,2 8"x20"

584



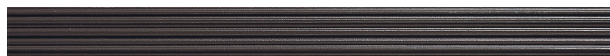
IN060P Interiors Moka (plane) 20x50,2 8"x20"

580



INL01A Interiors Listello Cold 4x50,2 1,6"x20"

536



IN060E Interiors Moka End 4x50,2 1,6"x20"

530



INL02A Interiors Listello Hot 4x50,2 1,6"x20"

536



interiors



IN030H Interiors Sky (hard) 20x50,2 8"x20"

584



IN030S Interiors Sky (soft) 20x50,2 8"x20"

584



IN030M Interiors Sky (medium) 20x50,2 8"x20"

584



IN030P Interiors Sky (plane) 20x50,2 8"x20"

580



INL01A Interiors Listello Cold 4x50,2 1,6"x20"

536




IN030E Interiors Sky End 4x50,2 1,6"x20"


530



INL02A Interiors Listello Hot 4x50,2 1,6"x20"

536

 Materiale venduto al mq - Item sold by sqmt
Article vendu au m2 - Artikel per qm verkauft

 Materiale venduto al pz - Item sold by piece
Article vendu a la piece - Artikel per stueck verkauft

i n t e r i o r s



IN040H Interiors Grey (hard) 20x50,2 8"x20"

584



IN040S Interiors Grey (soft) 20x50,2 8"x20"

584



IN040M Interiors Grey (medium) 20x50,2 8"x20"

584



IN040P Interiors Grey (plane) 20x50,2 8"x20"

580



INL01A Interiors Listello Cold 4x50,2 1,6"x20"

536




IN040E Interiors Grey End 4x50,2 1,6"x20"

530



INL02A Interiors Listello Hot 4x50,2 1,6"x20"

536

 Materiale venduto al mq - Item sold by sqmt
Article vendu au m2 - Artikel per qm verkauft

 Materiale venduto al pz - Item sold by piece
Article vendu a la piece - Artikel per stueck verkauft



IN070H Interiors Dark (hard) 20x50,2 8"x20"

584



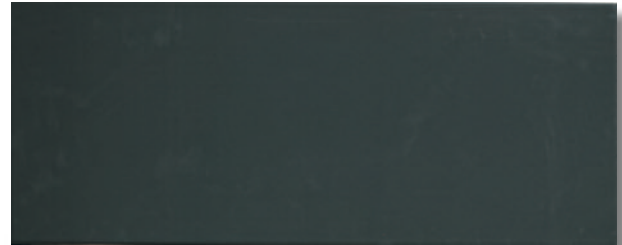
IN070S Interiors Dark (soft) 20x50,2 8"x20"

584



IN070M Interiors Dark (medium) 20x50,2 8"x20"

584



IN070P Interiors Dark (plane) 20x50,2 8"x20"

580



INL01A Interiors Listello Cold 4x50,2 1,6"x20"

536



IN070E Interiors Dark End 4x50,2 1,6"x20"

530



INL02A Interiors Listello Hot 4x50,2 1,6"x20"

536



i n t e r i o r s



IN010H Interiors White (hard) 20x50,2 8"x20"

584



IN010S Interiors White (soft) 20x50,2 8"x20"

584



IN010M Interiors White (medium) 20x50,2 8"x20"

584



IN010P Interiors White (plane) 20x50,2 8"x20"

580



INL01A Interiors Listello Cold 4x50,2 1,6"x20"

536




IN010E Interiors White End 4x50,2 1,6"x20"


530



INL02A Interiors Listello Hot 4x50,2 1,6"x20"



536

 Materiale venduto al mq - Item sold by sqmt
Article vendu au m2 - Artikel per qm verkauft

 Materiale venduto al pz - Item sold by piece
Article vendu a la piece - Artikel per stueck verkauft

Dati tecnici secondo norme:
 Technical data conform to:
 Caractéristiques techniques d'après normes:
 Technische Daten nach den Normen:

EN14411 BIII GL

Caratteristiche tecniche Technical data Caractéristiques techniques Technische Daten	Norme Norms Normes Norm	Valori ascot Value ascot Valeur ascot Wert ascot	Caratteristiche tecniche Technical data Caractéristiques techniques Technische Daten	Norme Norms Normes Norm	Valori ascot Value ascot Valeur ascot Wert ascot
 Resistenza all'abrasione Abrasion resistance Résistance à l'abrasion Abrasionswiderständigkeit	ISO 10545-7	PEI V	 Durezza Mohs Mohs hardness Dureté Mohs Härte Mohs	UNI 101	5

IMBALLI - PACKING - VERPACKUNG - EMBALLAGE - EMBALAJE

FORMATO	MQ./SCATOLA	PEZZI/SCATOLA	KG./SCATOLA	SCATOLE/PALLET	MQ./PALLET	KG./PALLET	SPESSORE
SIZE	SQM./BOX	PIECES/BOX	KG./BOX	BOXES/PALLET	SQM./PALLET	KG./PALLET	THICKNESS
FORMAT	QM./KARTON	STÜCK/KARTON	KG./KARTON	KARTONS/PALETTE	QM./PALETTE	KG./PALETTE	EPAISSEUR
FORMAT	M ² /BOÎTE	PIECES/BOÎTE	KG./BOÎTE	BOÎTE/PALETTE	M ² /PALETTE	KG./PALETTE	STÄRKE
FORMATO	MQ./CAJA	PIEZAS/CAJA	KG./CAJA	CAJA/PALLET	MQ./PALLET	KG./PALLET	ESPEJOR
20x50,2 fondo hard	1,3052	13	20,00	48	62,65	975	10 mm
20x50,2 fondo medium	1,3052	13	20,00	48	62,65	975	10 mm
20x50,2 fondo soft	1,3052	13	20,00	48	62,65	975	10 mm
20x50,2 fondo plane	1,3052	13	20,00	48	62,65	975	10 mm
4x50,2 listello	-	4	-	-	-	-	
4x50,2 end	-	4	-	-	-	-	



C E R A M I C H E

CERAMICHE ASCOT S.P.A.
 VIA CROCE, 80
 41014 SOLIGNANO (MO) ITALY
 TEL +39 059 77.84.11
 FAX +39 059 77.84.44/43
 info@ascot.it
 www.ascot.it